



Product Information & Manual

Information of other products is available at: www.leadgenebio.com

Porcine Mycoplasma Hyopneumoniae Antigen Rapid Test Kit

Cat no. LDG0004LR

Description

Mycoplasma hyopneumoniae (Mhp) is widely recognized as the primary etiological agent of Swine Enzootic Pneumonia (SEP). This pathogen spreads through airborne droplets from infected pigs, leading to significant harm to their growth performance and rendering them highly susceptible to other severe secondary infections. These complications frequently result in acute pneumonia, severe respiratory issues, and even mortality, causing substantial economic losses for pig farms. A key challenge with Mhp is its lack of a cell wall, rendering common antibiotics like penicillin ineffective. Furthermore, Mhp is notoriously difficult and slow to cultivate in laboratories, making traditional detection methods arduous. Therefore, rapid and convenient screening is crucial for pig farms to swiftly implement control measures, effectively curb disease spread, reduce the risk of secondary infections, and minimize economic losses.

The Porcine Mycoplasma Hyopneumoniae Antigen Rapid Test Kit is based on the sandwich lateral flow immunoassay (sandwich LFIA) principle and is specifically designed for the detection of the *Mycoplasma Hyopneumoniae* p46 protein antigen. This method employs specific antibodies to capture and visualize the p46 protein antigen, delivering results rapidly without requiring complex laboratory equipment. **Crucially, this test is intended for research use only and is NOT suitable for diagnostic or therapeutic applications.**

Kit Components

Mycoplasma Hyopneumoniae Antigen Lateral Flow Device	10 strips
Prefilled Extraction Tube (400 µL Extraction Buffer/bottle)	10 bottles
Single-use Dropper	10 pcs
Single-use Sampling Swab	10 pcs
Instruction Manual	1

Sample Requirements and Dilution Conditions

Sample Type	Dilution Requirements
Swab Specimen	Collect a nasopharyngeal sample using a swab and immerse the swab in Extraction Buffer for lysis.

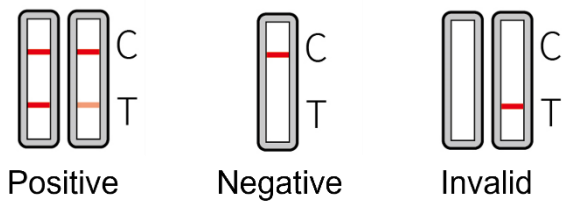
Protocol

1. Remove the test device from the foil pouch and place it on a clean and level surface.
2. Collect a nasopharyngeal sample using a swab.
3. Immerse the swab sample into the Extraction Buffer tube, then roll the swab at least five times.
4. Leave the swab in the Extraction Buffer tube for one minute to ensure thorough lysis.
5. Using a dropper, dispense five drops (approximately 100 µL) of the sample into the sample well of the test device.
6. Interpret the result after 15 minutes.

Materials required but not provided

- Timers

Result Interpretation



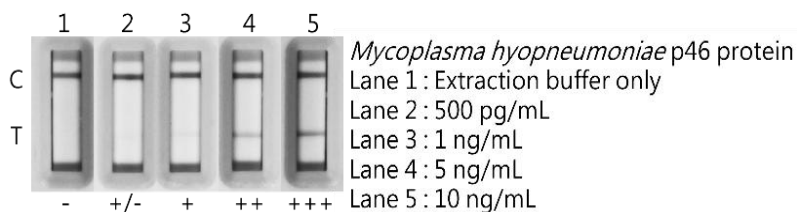
Performance

Porcine *Mycoplasma Hyopneumoniae* Antigen Rapid Test Kit has a minimum detection limit for *Mycoplasma Hyopneumoniae* p46 protein of approximately 1 ng/mL.

Storage

1. Test kits should be stored at room temperature.
2. Test devices must remain in the sealed foil pouch until use, as they are sensitive to humidity.
3. Test kits are for single use only and should not be reused.
4. Do not use the kit if the package is damaged, or the physical appearance is altered.

Example



Disclaimer

For Research Use or Further Manufacturing Only.

LEADGENE BIOMEDICAL, INC.

No.9, Ln. 147, Zhengbei 1st Rd., Yongkang Dist., Tainan City 710, Taiwan R.O.C. TEL: +886-6-2536677 FAX: +886-6-2531536